



Multimodal Station Area Plan Planning Process Update



Charlotte-Mecklenburg Planning Commission

December 7, 2004

Stakeholder Committee Formation & Initial Plan Development (Spring 04)

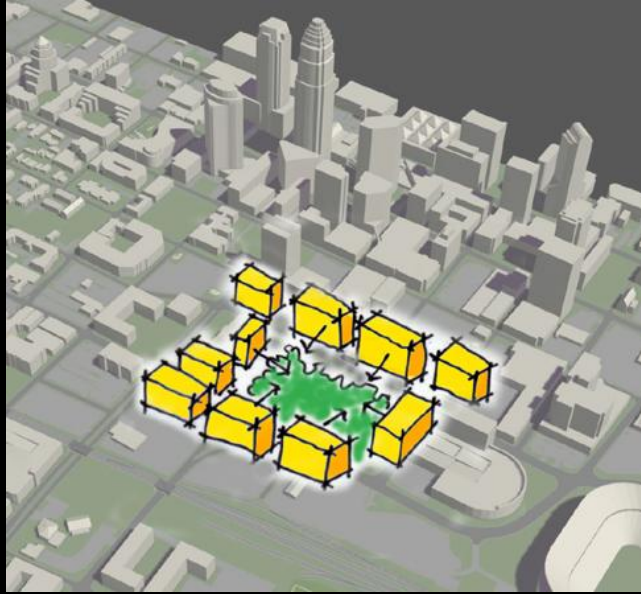
Market Analysis (October 04)

CMPC Planning Workshop (November 04)

Stakeholder Committee Review & Public Debrief (December 04)

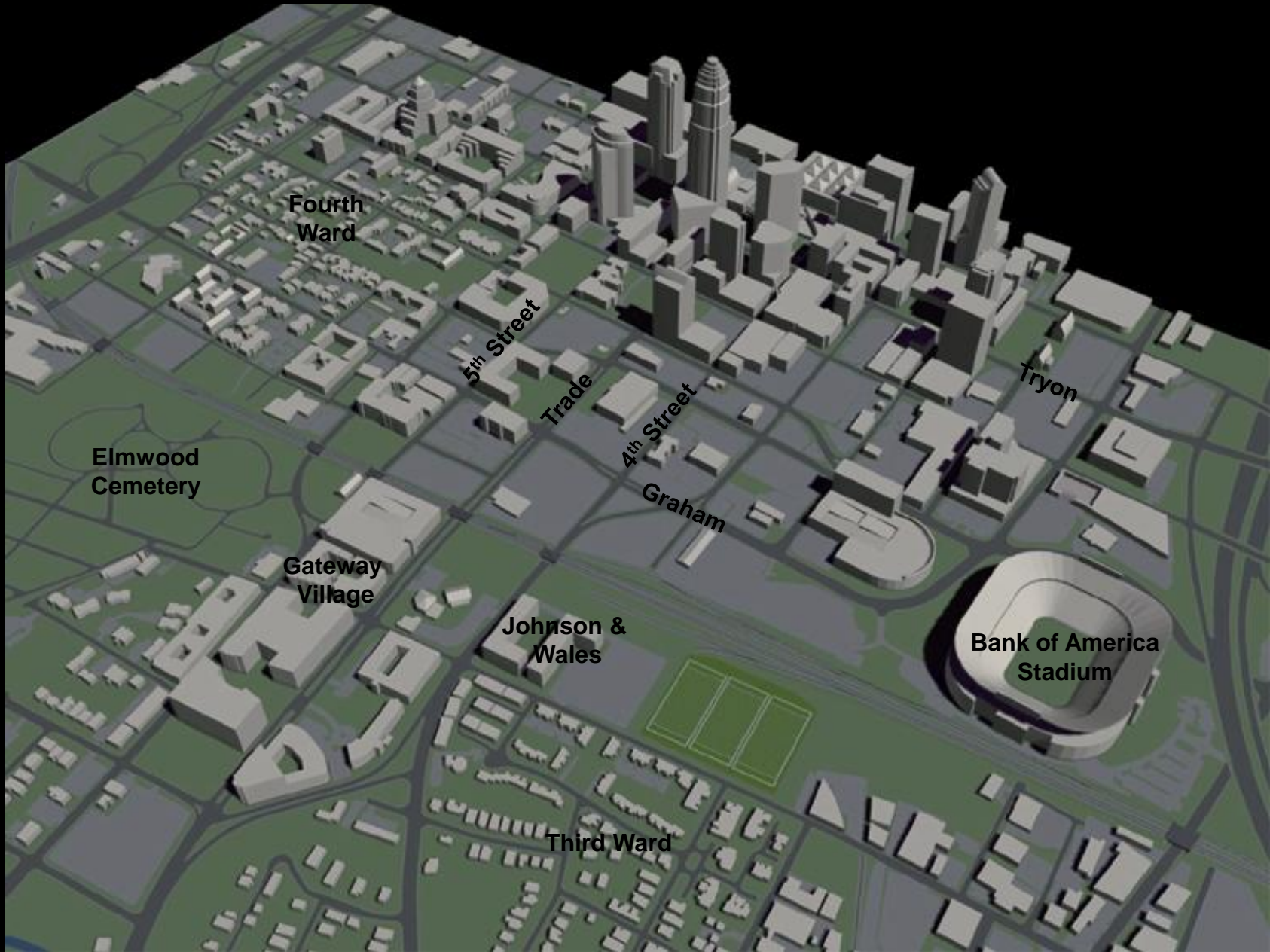
Multimodal Station Design Charrette (February 05)

Plan Finalization and Adoption (Feb-Mar. 05)



Station Area Plan

Context



Fourth
Ward

5th Street

Trade

4th Street

Tryon

Elmwood
Cemetery

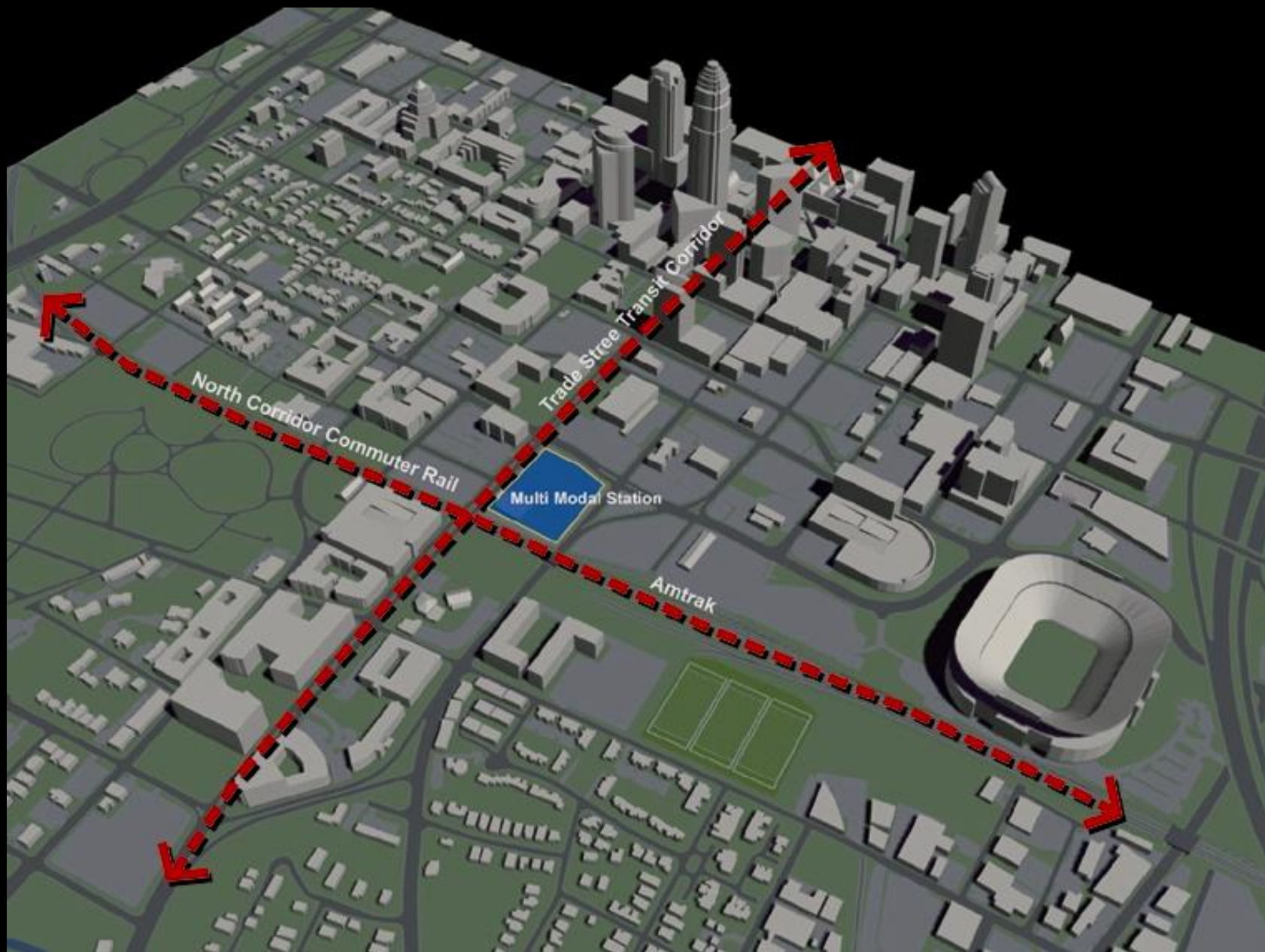
Gateway
Village

Graham

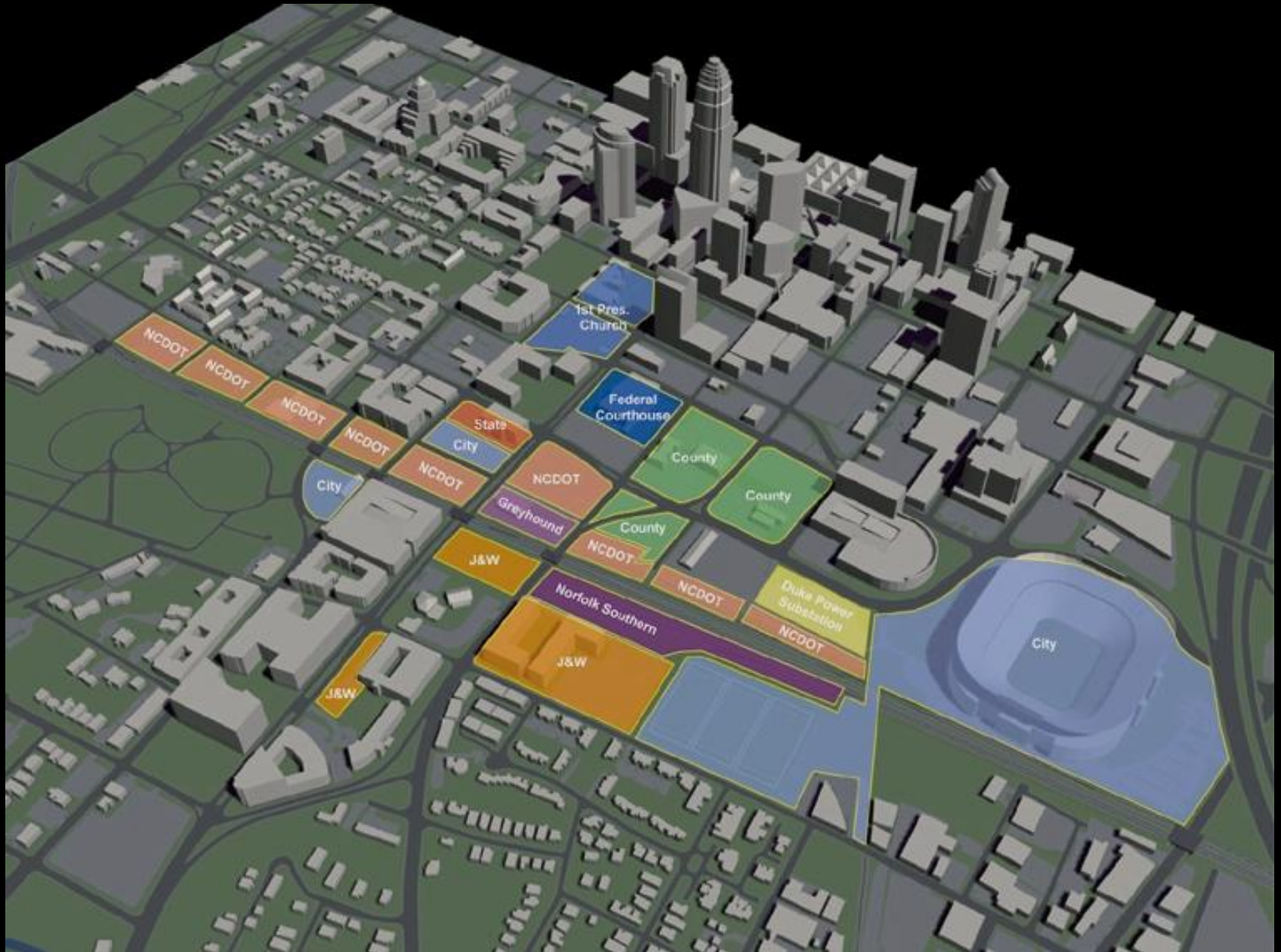
Johnson &
Wales

Bank of America
Stadium

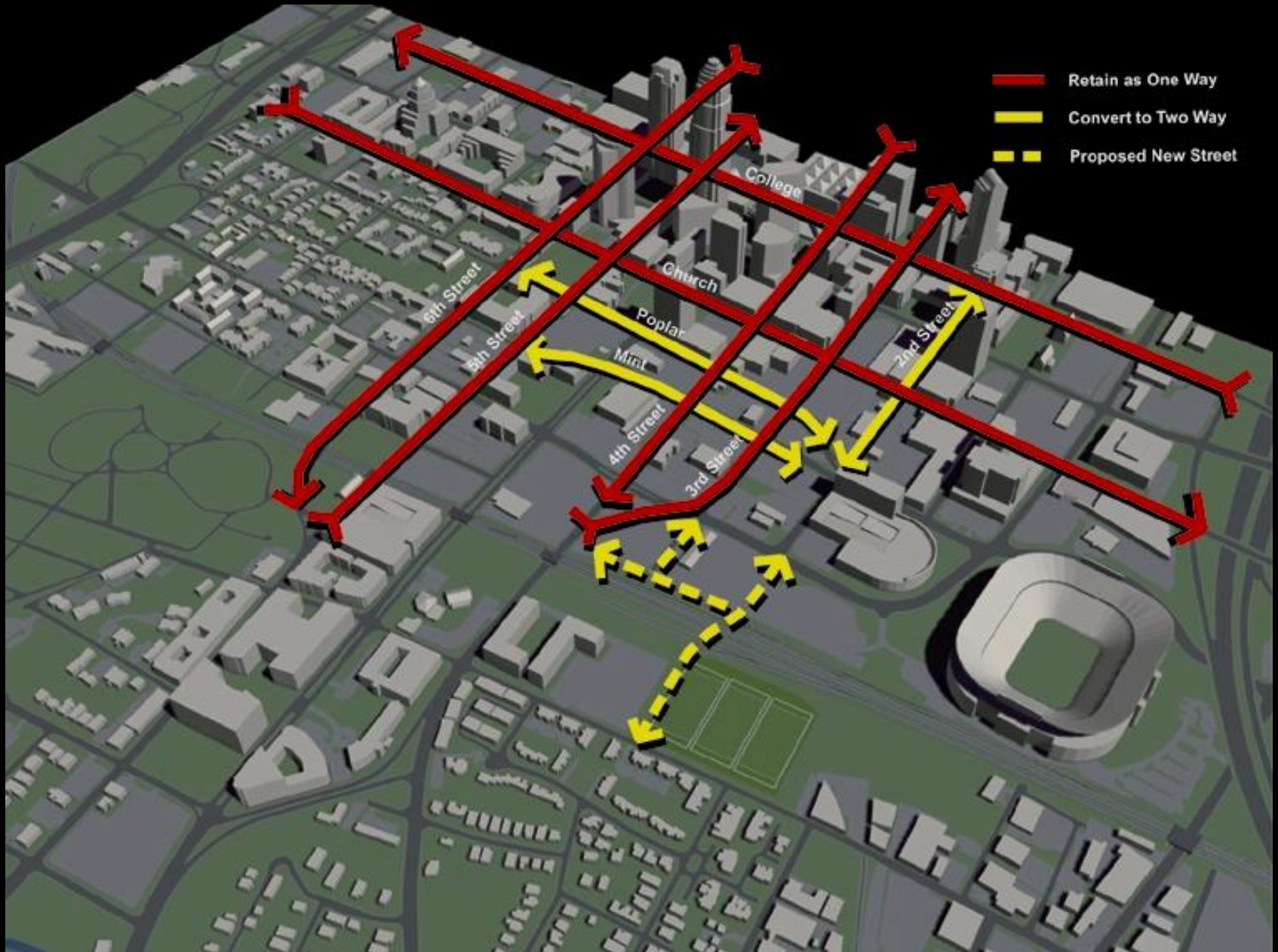
Third Ward



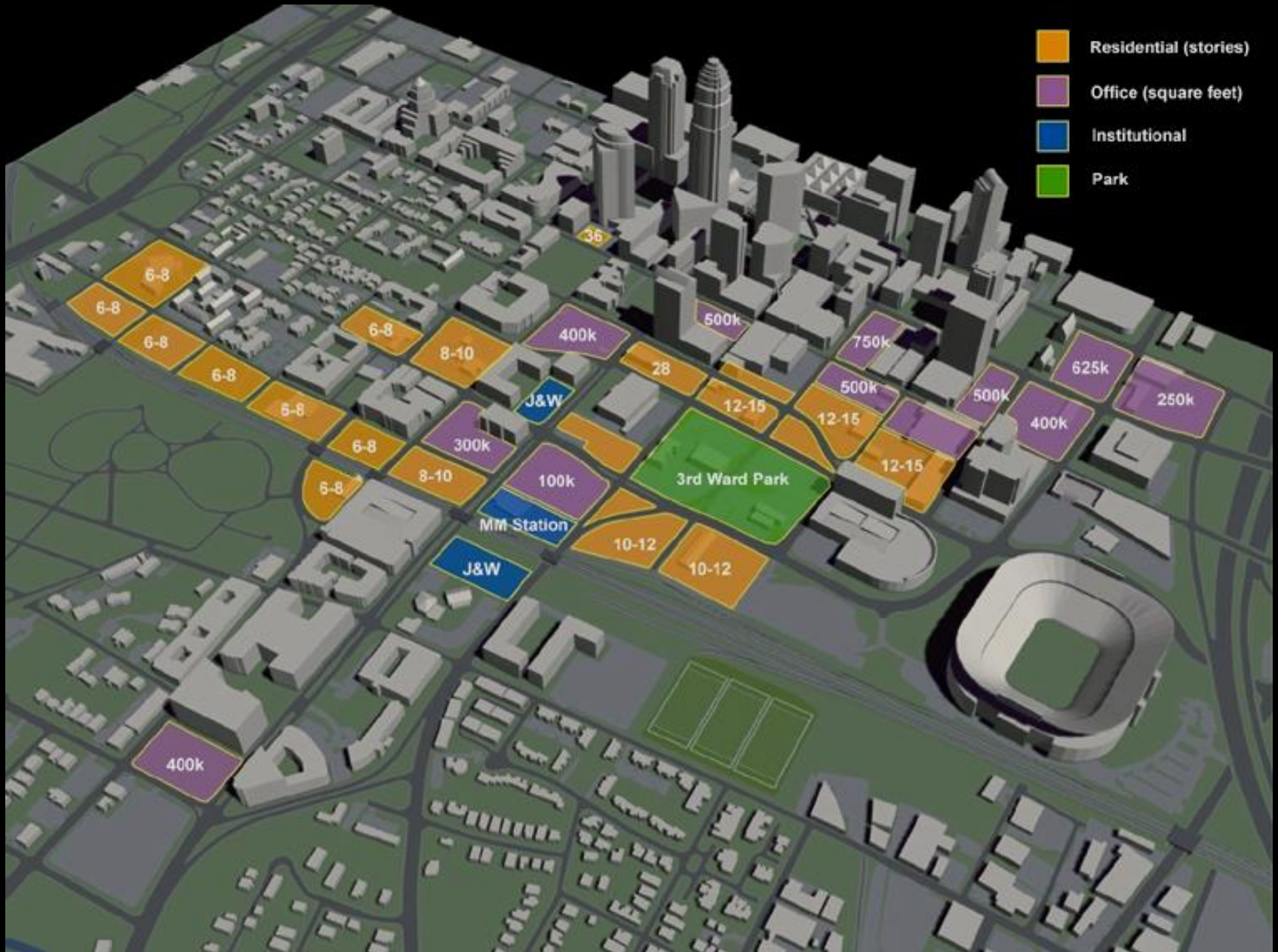
Ownership

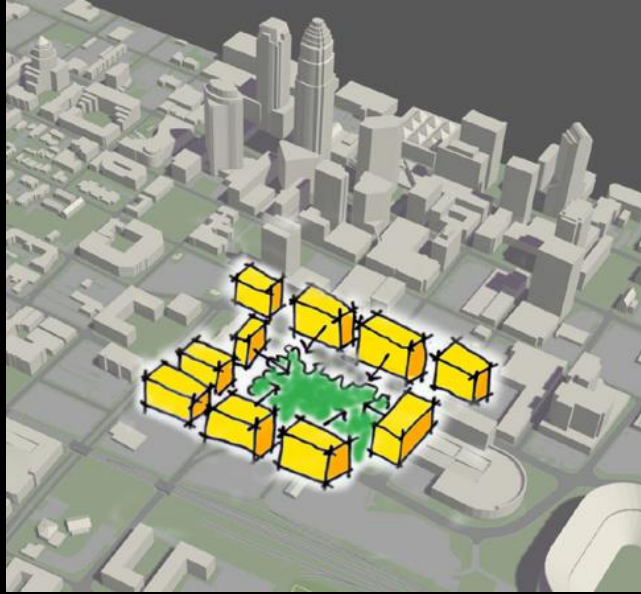


City Center Transportation Plan



Market Assessment





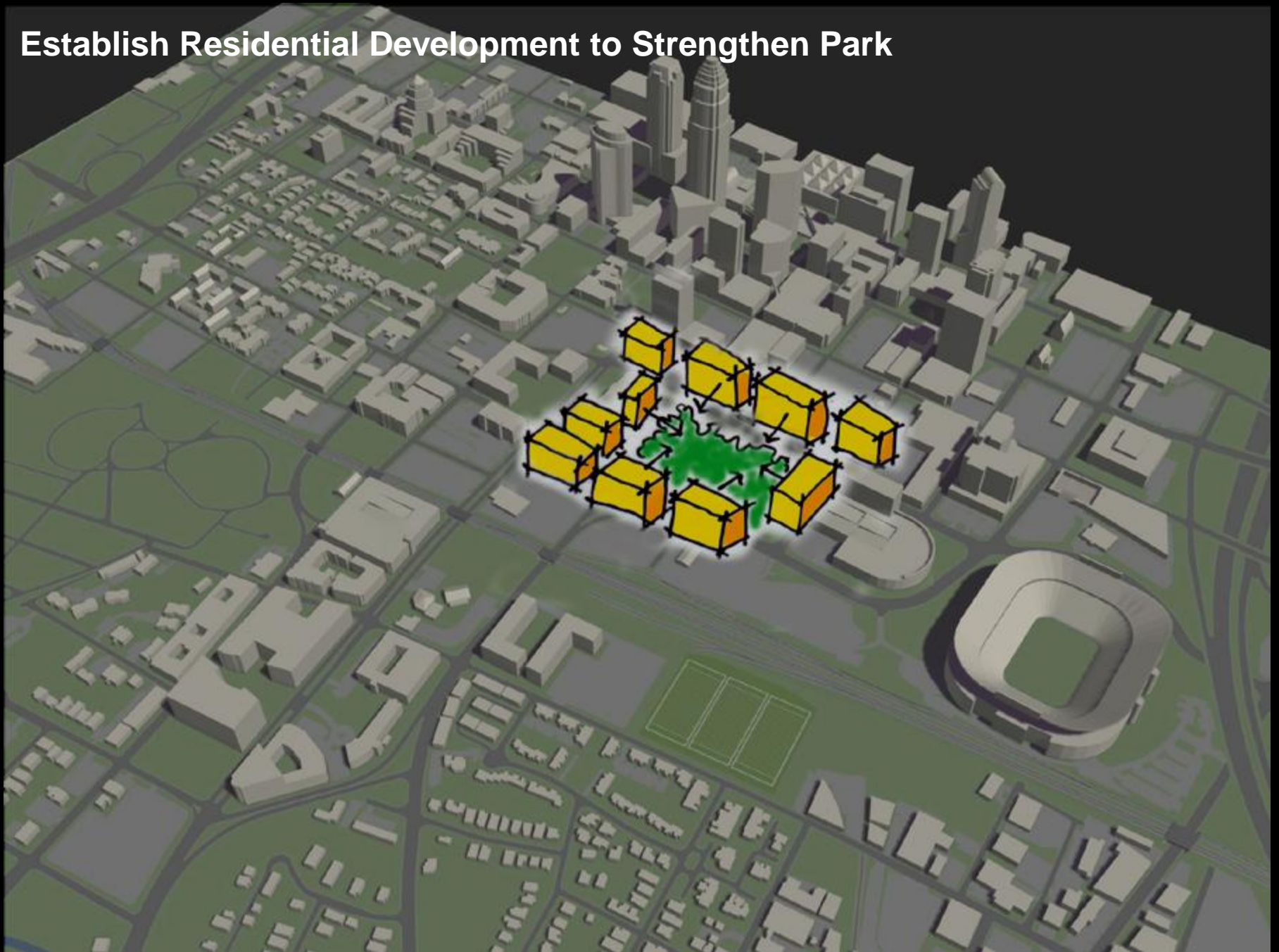
Station Area Plan

Emerging Themes

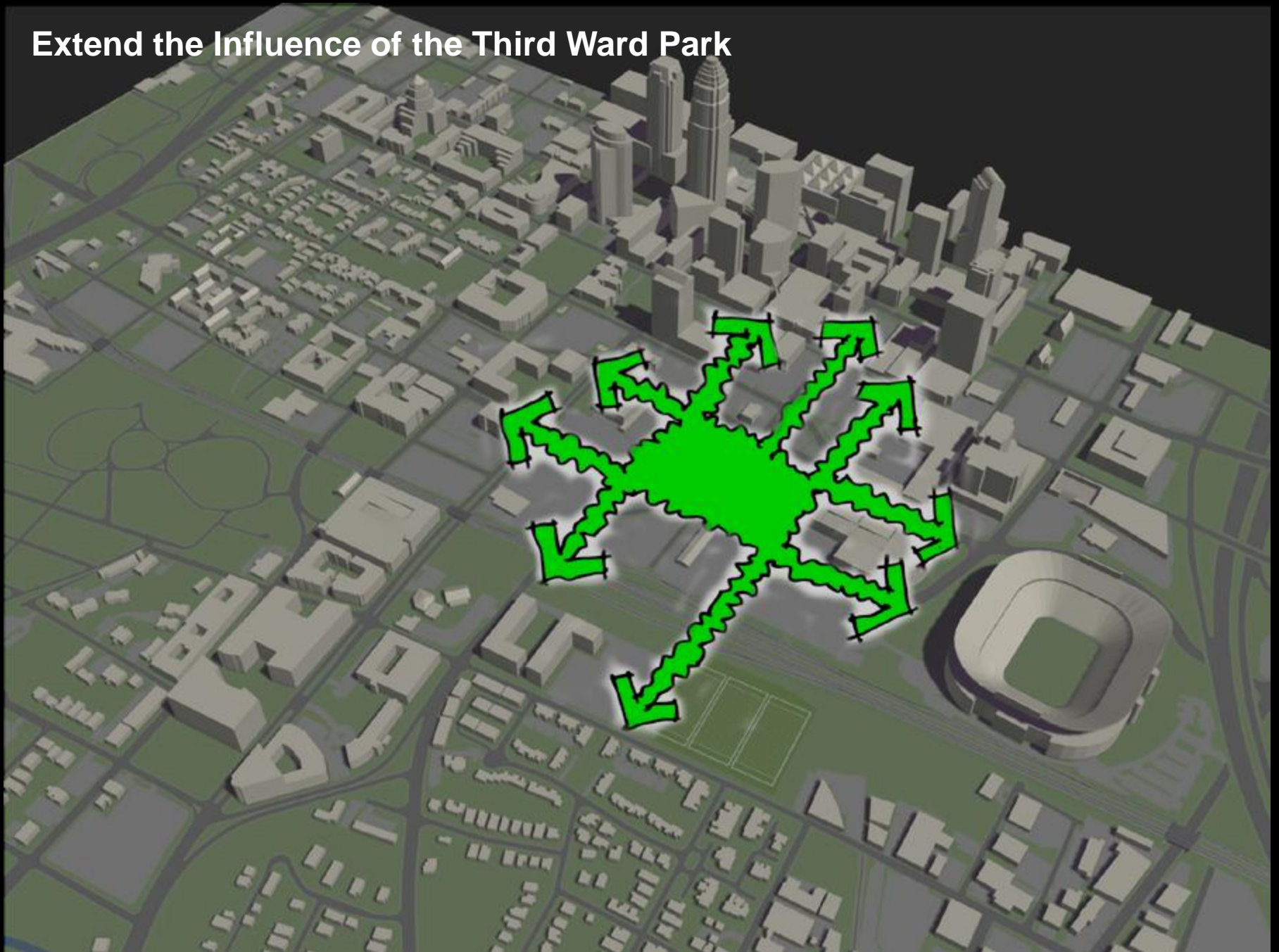
Recognize Trade & Tryon as the Signature Office Address



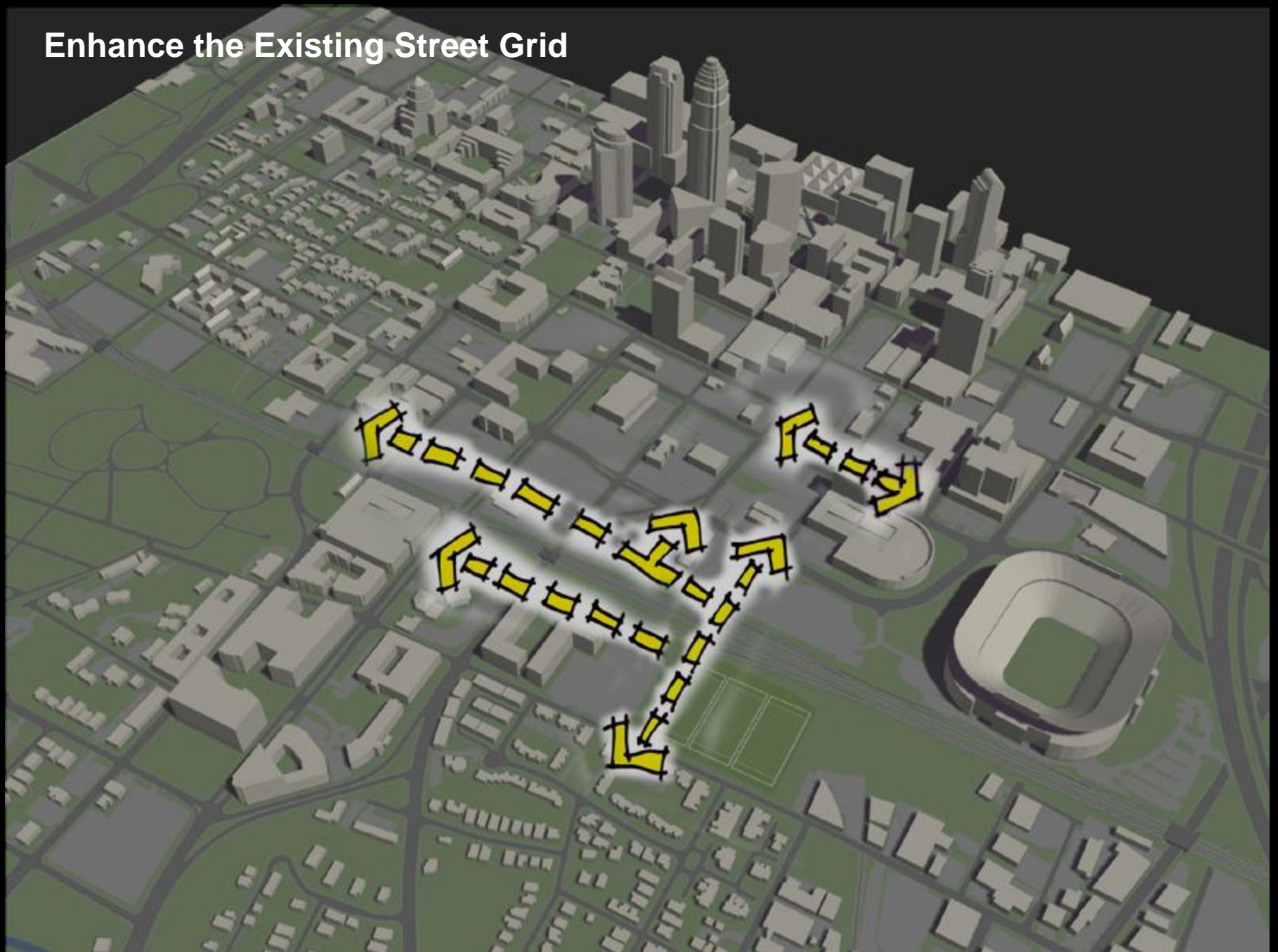
Establish Residential Development to Strengthen Park



Extend the Influence of the Third Ward Park



Enhance the Existing Street Grid



Maximize Employment Uses Around the Station





Station Area Plan

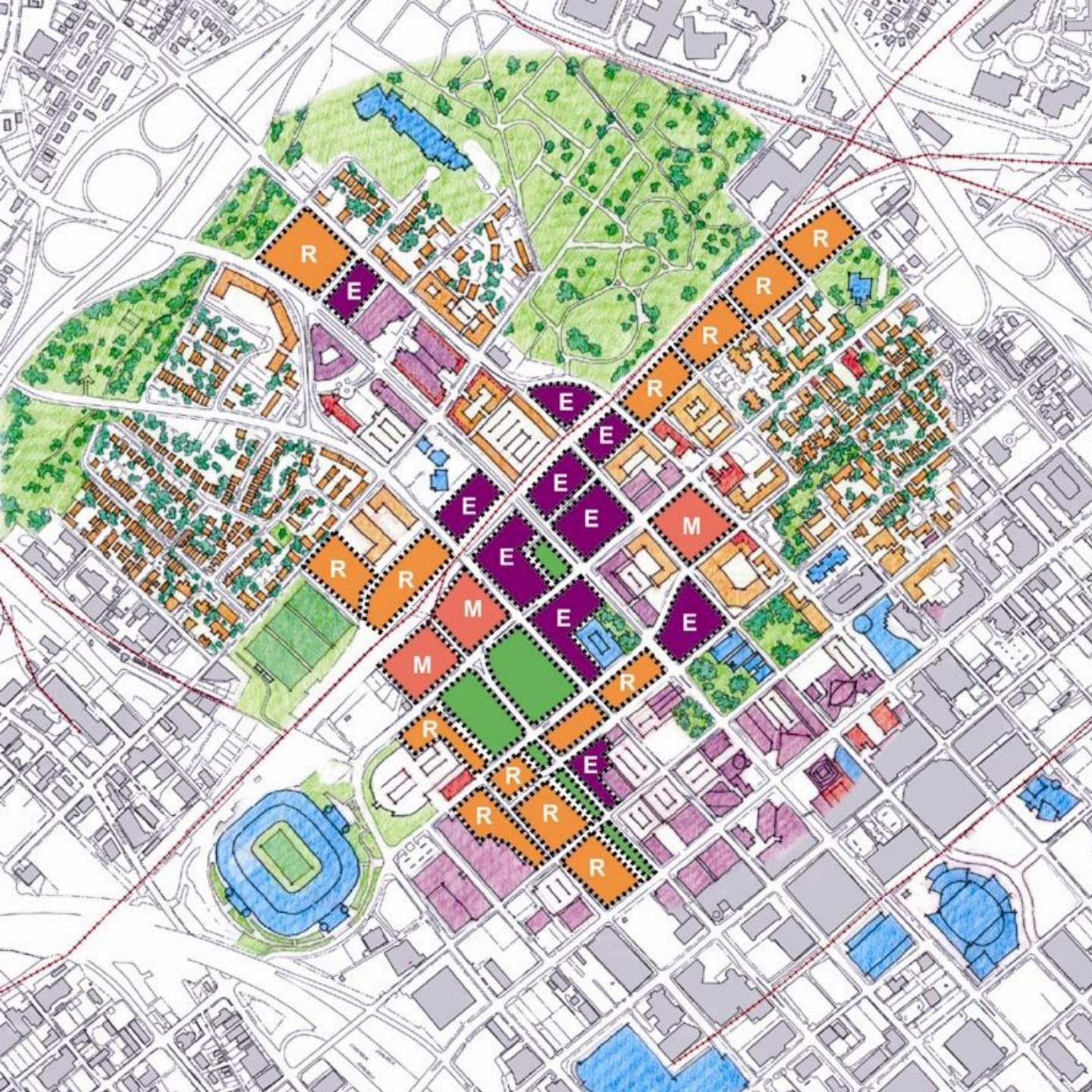
Urban Design & Land Use

Existing Land Use Portrait



- Third & Fourth Ward neighborhoods disconnected
- Gateway Village disconnected from Uptown office

Proposed Land Use Scenario



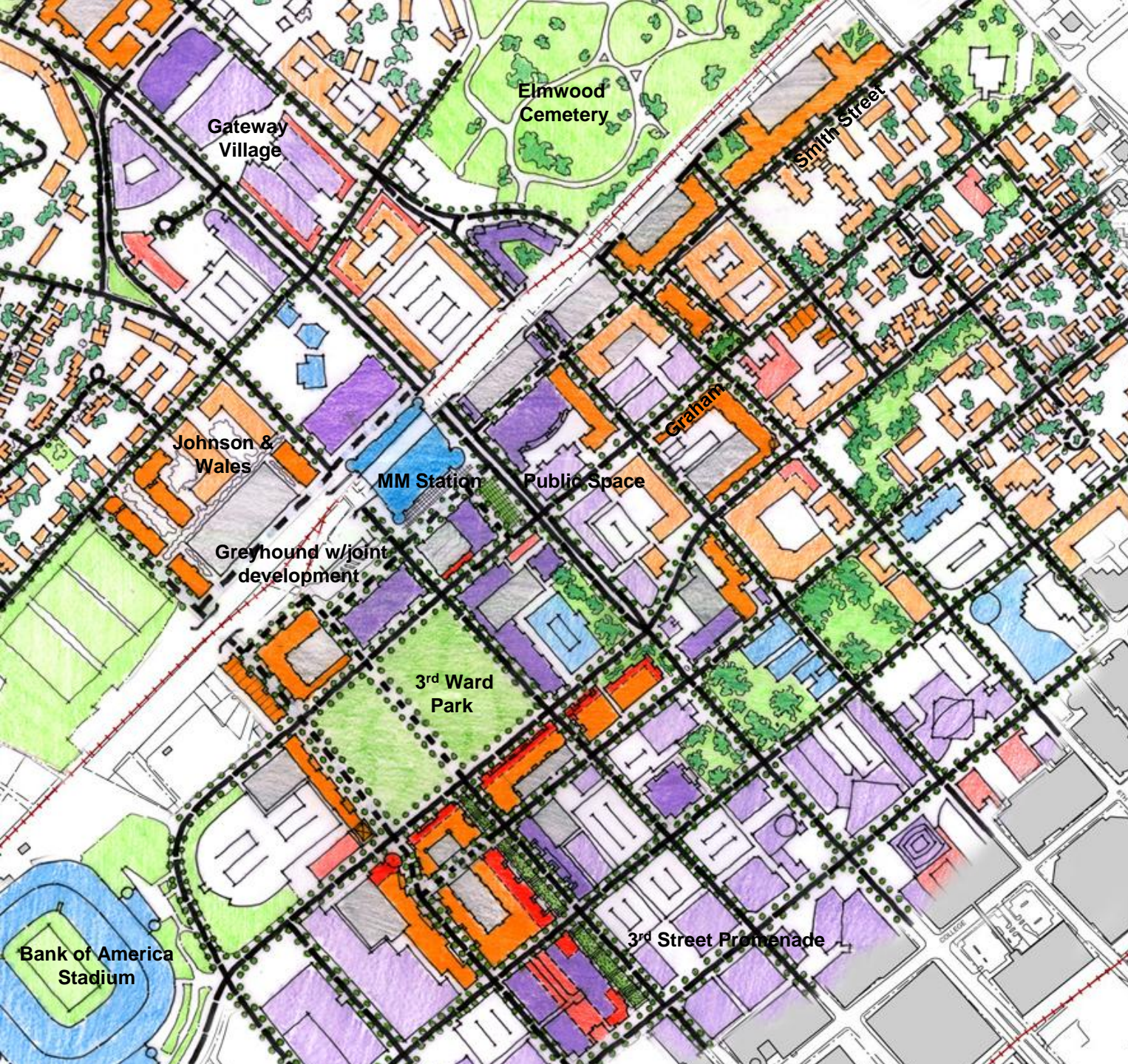
- Focus employment uses along Trade to connect Gateway to Tryon & take advantage of MM Station
- Establish residential uses around the park & along established neighborhood edges

Urban Design Plan



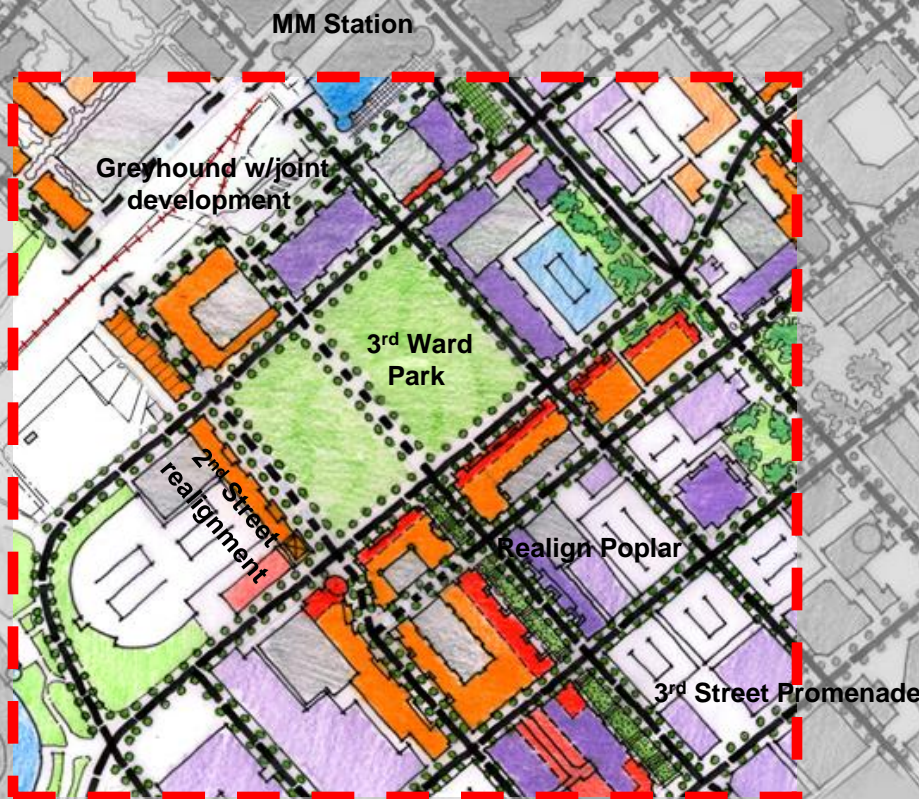
- Third Ward Park
- Extend 2nd Street to Cedar & other network connections
- Third St. “promenade” from park to Tryon
- Residential development around park & on neighborhood edges
- Office development around station & along Trade
- Extend Smith/Wilkes to connect to station

Urban Design Plan



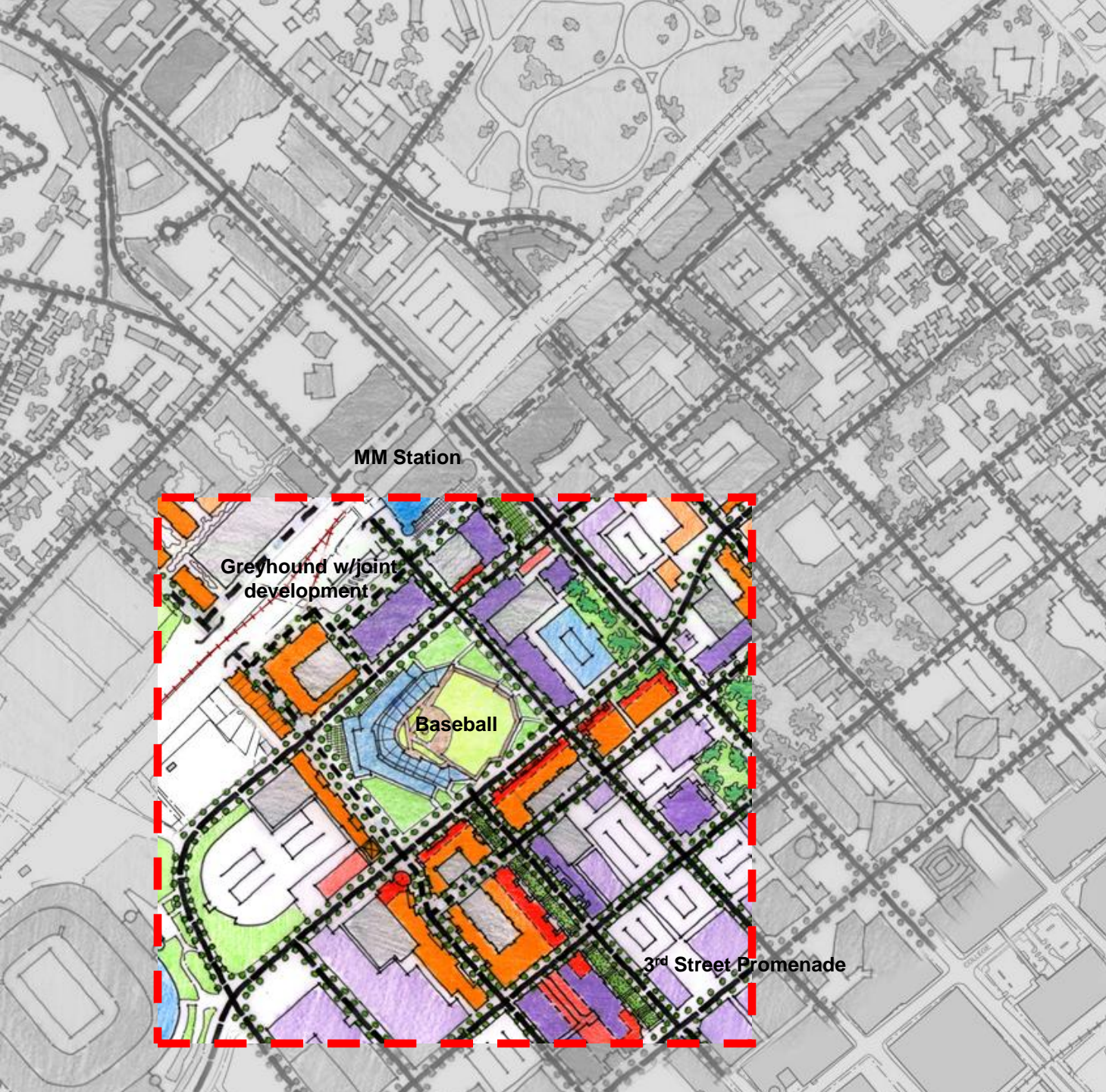
Third Ward Park

- Extend 2nd Street to Cedar & other network connections
- Realign 2nd Street to allow residential to face park
- Third St. “promenade” from park to Tryon
- Realign Poplar to make development block on park
- Potential of 3rd St. through park as “peak hour” street
- Residential development around park
- Office development around station & along Trade
- Greyhound incorporated in mixed use block btw 4th & 3rd

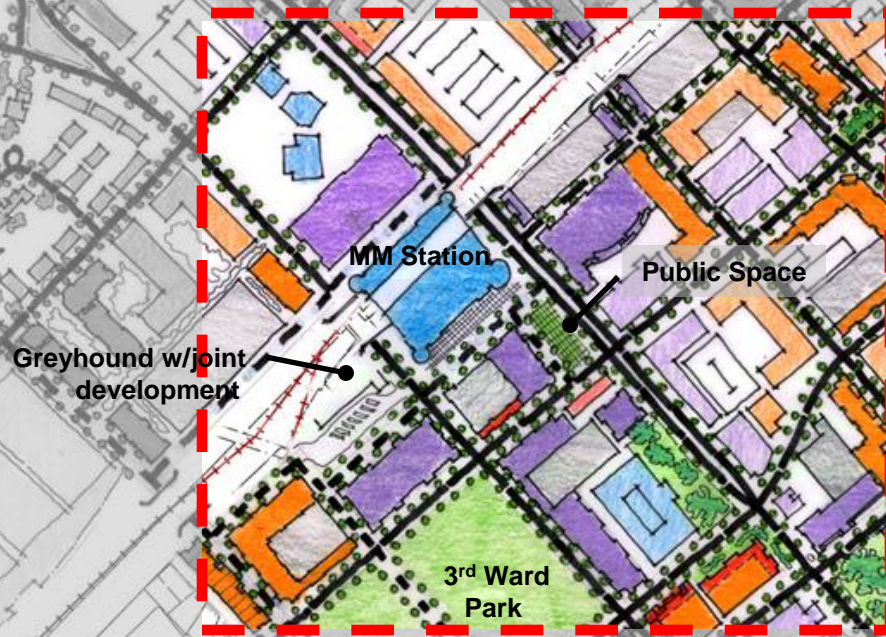


Third Ward Park

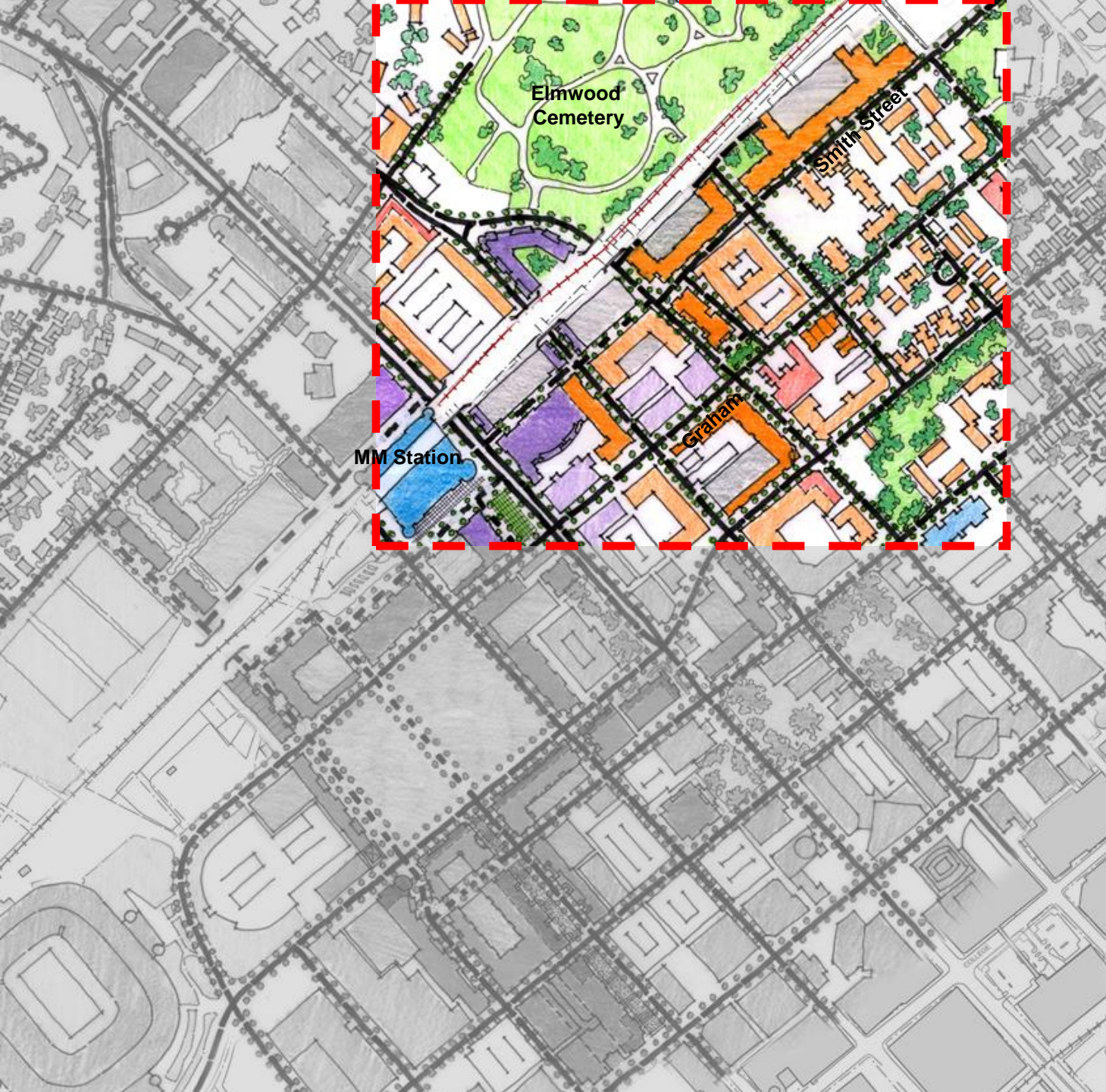
- Baseball Option



Multimodal Station



- Orient public space at MM Station to Trade Street
- Allow connection through MM Station block (parallel to Graham)
- Focus office development around station
- Incorporate Greyhound into joint development block south of station



Fourth Ward/ Smith Street

- Extend Smith/Wilkes to the station
- Face residential development to the neighborhood w/parking along tracks

